

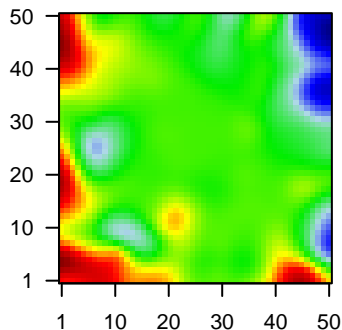
# MPI-184

## Global Summary

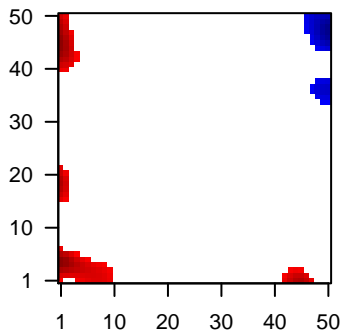
%DE = 0.04  
 # genes with fdr < 0.2 = 390 ( 219 + / 171 - )  
 # genes with fdr < 0.1 = 287 ( 158 + / 129 - )  
 # genes with fdr < 0.05 = 177 ( 103 + / 74 - )  
 # genes with fdr < 0.01 = 107 ( 68 + / 39 - )  
 # genes in genesets = 13152

<FC> = 0  
 <t-score> = 0.17  
 <p-value> = 0.28  
 <fdr> = 0.96

Portrait



Regulated Metagenes



## Global Genelist

Rank	ID	log(FC)	fdr	p-value	Description
1	201909_at	-1.37	2e-16	6e-13	43 x 49 ribosomal protein S4, Y-linked 1 [Source:HGNC Symbol;Acc:HGNC:10000]
2	202018_s_at	2.27	2e-16	6e-13	11 x 4 lactotransferrin [Source:HGNC Symbol;Acc:HGNC:6720]
3	203021_at	2.4	2e-16	6e-13	22 x 12 secretory leukocyte peptidase inhibitor [Source:HGNC Symbol;Acc:HGNC:10000]
4	204259_at	2.45	2e-16	6e-13	6 x 3 matrix metalloproteinase 7 [Source:HGNC Symbol;Acc:HGNC:10000]
5	205967_at	-1.35	2e-16	6e-13	37 x 49 histone cluster 1 H4 family member c [Source:HGNC Symbol;Acc:HGNC:10000]
6	206835_at	2.86	2e-16	6e-13	41 x 10 statherin [Source:HGNC Symbol;Acc:HGNC:11369]
7	207861_at	2.22	2e-16	6e-13	0 x 20 C-C motif chemokine ligand 22 [Source:HGNC Symbol;Acc:HGNC:10000]
8	217022_s_at	1.4	2e-16	6e-13	0 x 2 immunoglobulin heavy constant alpha 2 (A2m marker) [Source:HGNC Symbol;Acc:HGNC:10000]
9	209823_x_at	-0.96	3e-14	6e-10	2 x 8 major histocompatibility complex, class II, DQ beta 1 [Source:HGNC Symbol;Acc:HGNC:10000]
10	211656_x_at	-0.91	6e-14	2e-09	2 x 9 major histocompatibility complex, class II, DQ beta 1 [Source:HGNC Symbol;Acc:HGNC:10000]
11	218002_s_at	1.86	1e-13	2e-09	11 x 5 C-X-C motif chemokine ligand 14 [Source:HGNC Symbol;Acc:HGNC:10000]
12	207377_at	1.85	2e-13	3e-09	9 x 35 PPP1R2C family member C [Source:HGNC Symbol;Acc:HGNC:10000]
13	202286_s_at	1.83	3e-13	4e-09	22 x 12 tumor associated calcium signal transducer 2 [Source:HGNC Symbol;Acc:HGNC:10000]
14	212654_at	1.81	6e-13	4e-09	0 x 23 tropomyosin 2 [Source:HGNC Symbol;Acc:HGNC:12011]
15	214669_x_at	0.81	8e-13	4e-09	0 x 3
16	201650_at	1.8	9e-13	9e-09	20 x 12 keratin 19 [Source:HGNC Symbol;Acc:HGNC:6436]
17	214040_s_at	1.78	2e-12	9e-09	6 x 4 gelsolin [Source:HGNC Symbol;Acc:HGNC:4620]
18	204561_x_at	-1.78	2e-12	8e-08	5 x 1 APOC4-APOC2 readthrough (NMD candidate) [Source:HGNC Symbol;Acc:HGNC:10000]
19	213385_at	1.71	1e-11	8e-08	0 x 17 chimerin 2 [Source:HGNC Symbol;Acc:HGNC:1944]
20	39318_at	0.9	1e-11	8e-08	46 x 49 T cell leukemia/lymphoma 1A [Source:HGNC Symbol;Acc:HGNC:10000]

## Global Geneset Analysis

Rank	GSZ	p-value	#all	Geneset
<i>Overexpressed</i>				
1	11.13	NULL	480	Cancer_Lembcke_ColonInflammation
2	11.01	NULL	516	GSEA_C2SMID_BREAST_CANCER_LUMINAL_B_DN
3	9.95	NULL	214	Lymphoma_ENZ_StromalSignature1
4	9.44	NULL	18	Lymphoma_WRIGHT_ABC_UP
5	9.09	NULL	1930	ChromatinState_ESSA
6	8.83	NULL	2507	ChromatinState_FetalLobe_ReprPC
7	8.77	NULL	229	GSEA_C2OL_PLASMACYTOMA_UP
8	8.67	NULL	693	ChromatinState_peripheral_blood_3_TxFnk
9	8.61	NULL	3724	ChromatinState_peripheral_blood_12_EnhBiv
10	8.59	NULL	2203	ChromatinState_Colon
11	8.51	NULL	443	GSEA_C2CHICAS_RB1_TARGETS_CONFLUENT
12	8.32	NULL	176	GSEA_C2PICCALUGA_ANGIOIMMUNOBLASTIC_LYMPHOMA_UP
13	8.18	NULL	85	Lymphoma_DLBCL_UP
14	8.05	NULL	3734	ChromatinState_peripheral_blood_13_ReprPC
15	8.05	NULL	14	Cancer_LIU_PROSTATE_CANCER_DN
16	8.04	NULL	178	GSEA_C2WU_CELL_MIGRATION
17	8.01	NULL	52	BP_complement_activation_classical_pathway
18	7.9	NULL	132	Colon_Cancer_CRC-cluster-a
19	7.85	NULL	608	GSEA_C2SMID_BREAST_CANCER_BASAL_UP
20	7.82	NULL	354	GSEA_C2RODWELL_AGING_KIDNEY_UP
<i>Underexpressed</i>				
1	-10.81	NULL	7225	ChromatinState_fetal_midbrain_ReprPC
2	-10.18	NULL	5753	ChromatinState_peripheral_blood_4_Tx
3	-10.17	NULL	4683	ChromatinState_fetal_midbrain_HetRpts
4	-10.16	NULL	5601	ChromatinState_killer_cells_peripheral_blood_4_Tx
5	-10.12	NULL	6637	ChromatinState_peripheral_blood_5_TxWk
6	-9.96	NULL	4528	ChromatinState_naive_cells_peripheral_blood_4_Tx
7	-9.66	NULL	5908	Lymphoma_OPP_Active_promoter
8	-9.54	NULL	7078	ChromatinState_peripheral_blood_5_TxWk
9	-9.22	NULL	6068	ChromatinState_ESC_Endoderm
10	-9.17	NULL	5766	ChromatinState_killer_cells_peripheral_blood_4_Tx
11	-9.17	NULL	5716	ChromatinState_peripheral_blood_4_Tx
12	-9.12	NULL	5527	ChromatinState_tregulatory_cells_peripheral_blood_4_Tx
13	-8.94	NULL	5529	Lymphoma_OPP_Txn_elongation
14	-8.91	NULL	6099	ChromatinState_Glioblastoma_Tx
15	-8.83	NULL	6244	ChromatinState_Glioblastoma_Fibroblasts
16	-8.66	NULL	2325	ChromatinState_ZNF_ZNF_Rpts
17	-8.56	NULL	3554	ChromatinState_ZNF_ZNF_Rpts_ESC_Endoderm
18	-8.44	NULL	7407	ChromatinState_killer_cells_peripheral_blood_5_TxWk
19	-8.34	NULL	5682	Lymphoma_OPP_Weak_promoter
20	-8.33	NULL	6590	ChromatinState_tregulatory_cells_peripheral_blood_5_TxWk

p-values

